



## ROYAL- 4



EXTRAORDINARY CART

Headquarters: Riyadh Business Front, Building number S 4

contact: [Info@extraordinarycart.com.sa](mailto:Info@extraordinarycart.com.sa) - 920033466

website: [www.extraordinarycart.com.sa/en/](http://www.extraordinarycart.com.sa/en/)

# WHAT ARE THE FEATURES

- 1 Pedals**  
Integrating acceleration, brake and parking together. Braking distance is adjustable.
- 2 LAMINATED WINDSHIELD**  
UNIQUELY RESISTANT TO THE ELEMENTS AND WILL NOT RUST OR CORRODE OVER TIME
- 3 LED HEADLIGHTS**  
HIGH BEAM-LOW BEAM-DAYTIME RUNNING LIGHT-TURN SIGNALS
- 4 WHEEL**  
14" ALLOY WHEEL RIMS WITH COLOR MATCHING
- 5 INJECTION MOULDED CANOPY**  
UNIQUELY RESISTANT TO THE ELEMENTS AND WILL NOT RUST OR CORRODE OVER TIME
- 6 STORAGE**  
AUTOMOTIVE STYLE DASH WITH ROOM FOR MORE ACCESSORIES
- 7 STEERING WHEEL**  
AUTOMOTIVE, MULTIFUNCTIONAL STEERING WHEEL
- 8 USB PORT**  
USB CHARGERS KEEP YOU CHARGED ON THE GO
- 9 DIGITAL SPEEDOMETER**  
WITH EXCELLENT LED WARNING LIGHTS, GAUGES BATTERY POWER, AND SAVES RIDE TIME AND LENGTH
- 10 REAR FLIP SEAT**  
THE REAR SEAT ALSO FLIPS OUT TO REVEAL A RUGGED BED TEXTURE AND SPACE FOR MOVING YOUR FAVORITE GEAR
- 11 COMFORT**  
UNIQUE STYLE, COMFORT GRIP, AND ENOUGH LEG ROOM TO ENJOY YOUR RIDE AND DRIVING EXPERIENCE
- 12 SEAT**  
WIDEST, MOST ERGONOMIC CONTOURED SEAT





## GIVES YOU QUALITY AND RELIABILITY

Rediscover the moments that take your breath away with the all-new ROYAL-3. The ROYOL-3 1 has room for 4 to embark on your effortless adventures. With a choice of a Maintenance-Free or Lithium batteries that offers unparalleled power, the ROYAL-3 electronic cart will take you on a getaway you'll never forget. With the most legroom in the .

Feel the difference the with a quiet drivetrain, premium comfort seating, and boosted acceleration. Cruise down any back road or neighborhood with your favorite tunes playing on our Bluetooth sound system. Completely reliable, totally customizable, the power is in your hands.

A close-up, front-facing view of a white utility vehicle, possibly a golf cart or maintenance car, parked on a paved surface. The vehicle features a black front bumper with two square LED fog lights. The main headlights are prominent, showing a dual-lens design. The steering wheel and dashboard are visible through the windshield. The background shows a paved area and some greenery.

# ***LED LIGHTING***

Our personal transportation vehicles come standard with LED lights: high beams, low beams, daytime running lights, turning signals and brake lights for a brighter ride. Our lights are more powerful with less drain on your batteries, and deliver a 2-3 times wider field of vision than our competitors, so you can enjoy the ride worry-free, even after the sun goes .

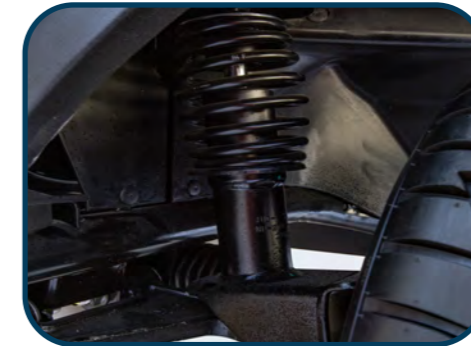
A white and black golf cart is parked on a paved area. The cart has a white body with black accents, including a large front bumper and a black roof. The windshield is laminated and appears to be tilted. The cart has two rows of seats, with the front row being black and the back row being white. The background shows a paved walkway and some greenery.

# ***LAMINATED WINDSHIELD***

With a rotary switch, the tilt angle of the laminated windshield is easy to be adjusted. Then just enjoy the cool breeze skating through tilted windshield.

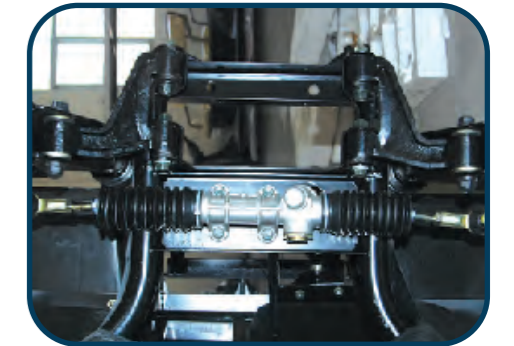


# ***FOUR-WHEEL STRUCTURE***



## **Shock absorber**

Adopting automobile steering system design, independent suspension system



## **Suspension system**

Independent shock absorber Make people more comfortable



## **SMOOTH RIDE**

Our new tires are smooth and quiet With a sleeker tread



## **Chassis**

High tensile steel welding structure, and anti-rust performance

## DETAILS



### Dual USB Port

With a dual USB port on your carts, you can provide golfers that added touch of keeping their phones charged



### Explicitly Digital Speedometer

With Excellent LED warning lights, Gauges battery power, and Saves ride time and length.



### STORAGE COMPARTMENT

dual-sized storage compartment, room for more items like keys and mobile devices.



### 1-SEAT SLIDE BAR

Move the seats forward or backward.

### 2-BACKREST TILT

Adjust the tilt angle of the backrest. (Customized Feature)

### 3-RETATABLE ARMREST

It can rotate in 90 degree and provide an ergonomic support for your cantilever elbows.

### 4-SAFETY BELT

with three-point safety belts in the front seats and two-point safety belts in the rear seats. (Customized Feature)



### Front and Rear

1080P resolution front camera Wide-angle front (170°) and rear (130°) camera help eliminate the blind spots of your vision



### REAR FLIP SEAT

Room for 2 to enjoy the ride. The rear seat also flips out to reveal a rugged bed texture and space for moving your favorite gear.



### CANOPY

Provides protection against the sun and rain. Its color is consistent with the vehicle body.

## CUSTOMIZE



### Police Lamp



### Music Player



### Solar Panels



### Battery Tray



### 6-8-12 Volt batteries



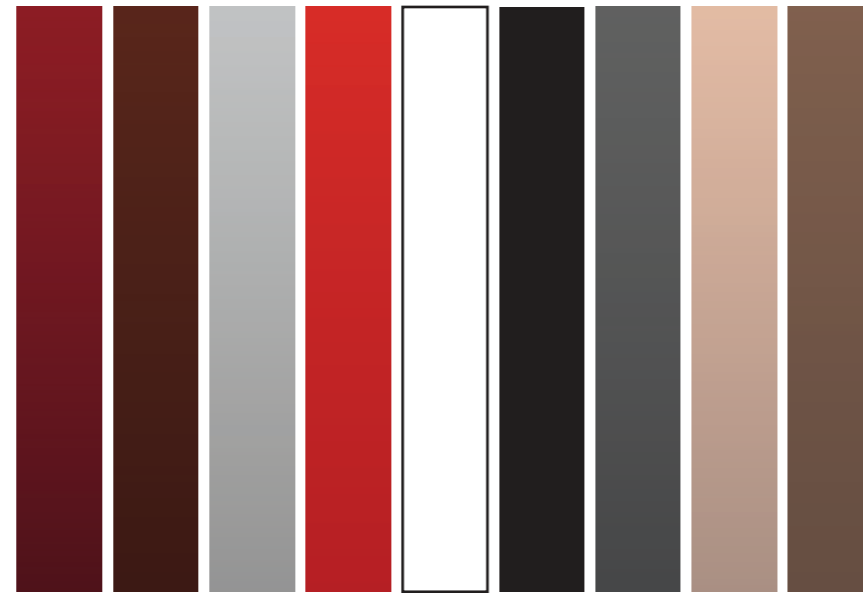
### Sunshine Cover

# COLOR OPTIONS

## BODY COLORS



## LEATHER SEATS COLORS



# DIMENSIONS

| Power  |   |  |                                  |                                      |                         |                         |
|--|---|--|----------------------------------|--------------------------------------|-------------------------|-------------------------|
| <b>Motor</b>                                 | <b>Batteries</b>                                  | <b>Charger</b>                                       | <b>Controller</b>                | <b>Overall Size</b>                  | <b>Ground Clearance</b> | <b>Tread Distance</b>   |
| 5 KW Asynchronous AC motor                   | T lead-acid battery, Long service life.6*8V 140AH | AC 48V 400A intelligent controller, climbing ability | Computer intelligent car charger | 3720×1210×1945mm                     | 110 mm                  | front 880mm/ rear 998mm |
| <b>Net Weight</b>                            | <b>Loading</b>                                    | <b>Max. cruise speed</b>                             | <b>System</b>                    | <b>Turning radius</b>                | <b>Climbing Ability</b> | <b>Maximum Mileage</b>  |
| 670 kg                                       | 4 People  | 35KM/H   | 48V 5KW AC system                | 3:2 m                                | 30%                     | 100km Per-Charge        |
| Steering & Suspension                        |   |  |                                  |                                      |                         |                         |
| <b>Steering</b>                              | <b>Front Suspension</b>                           |  | <b>Rear Suspension</b>           |                                      | <b>Turning Radius</b>   |                         |
| Self-compensating 'Rack & steering Pinion'   | Independent front suspension                      |  | Independent rear suspension      |                                      | 2.95 Meters             |                         |
| Brakes                                       |   |  |                                  |                                      |                         |                         |
| <b>Brakes</b>                                |   | <b>Park Brake</b>                                    |                                  | <b>Braking Distance</b>              |                         |                         |
| Self-Adjusting, Four Wheel discs brake + EMB |   | Foot actuated, 3-position                            |                                  | Less than 6 Meters                   |                         |                         |
| Body & Tires                                 |   |  |                                  |                                      |                         |                         |
| <b>Body and Finish</b>                       | <b>Tires</b>                                      | <b>LxWxH</b>   | <b>Wheelbase</b>                 | <b>Ground Clearance</b>              | <b>Tread</b>            |                         |
| Painted TPO                                  | (205x50 -10 ) Tubeless                            | 3720×1210×1945mm                                     | 12 31:1                          | 110mm                                | Front 900/Rear1000mm    |                         |
| <b>Total Vehicle Weight</b>                  |   | <b>Frame Type</b>                                    |                                  | <b>Floor</b>                         |                         | <b>Loading</b>          |
| 670 kg                                       |   | Aluminum   |                                  | Resin synthesis anti-slip rubber mat |                         | 4 Passengers            |





Click Down To

CALL US



920033466

VISIT US



Extraordinarycart.com.sa

FOLLOW US

